



Grinnell

by Tyco Fire Suppression & Building Products

Figure 909

Plain End Coupling

Ideal For:

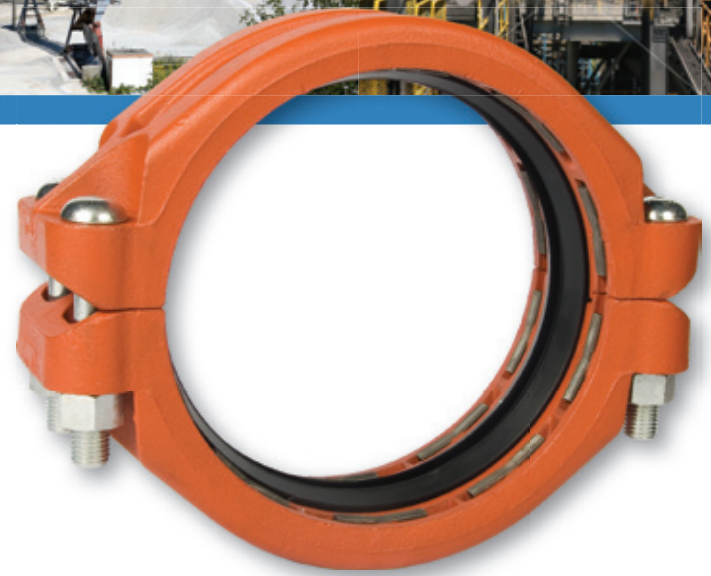
- Mining
- Retrofits
- Commercial & Industrial HVAC

Available in Sizes 2 to 10 inches (DN50 to DN250)

The Figure 909 Plain End Coupling utilizes case-hardened gripping teeth, which securely bite into the pipe surface. For sizes up to 4 inches, the Figure 909 Coupling features a swing-over design, and does not have to be fully disassembled before installation. This design makes installation faster, saving valuable labor time on the job site.

Additional Features

- Wide ductile iron body design with heavy housings ensures a strong connection
- Case-hardened steel gripping teeth securely bite into the pipe; curved teeth design provides largest surface contact area (See Figure A.)
- Rated for pressures up to 750 psi (51,7 bar)
- Domestically manufactured
- Backed by the industry's best 10-year Limited Warranty



Technical Data

Sizes

2 to 10 inches (DN50 to DN250)

Maximum Pressure

Up to 750 psi (51,7 bar)

Housing

Ductile iron conforming to ASTM A 536, Grade 65-45-12

Gripping Teeth

Case-hardened steel

Gasket Materials

- Grade "E" EPDM, Green color code
-30°F to 230°F (-34°C to 110°C)
- Grade "T" Nitrile, Orange color code
-20°F to 180°F (-29°C to 82°C)

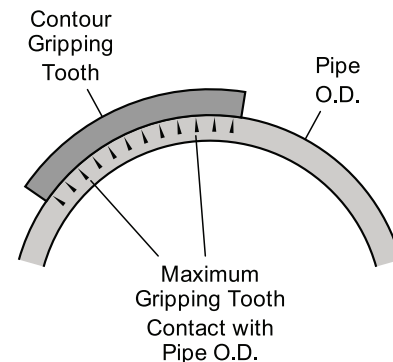


Figure A



800-558-5236
www.grinnell.com
mechserv@grinnell.com

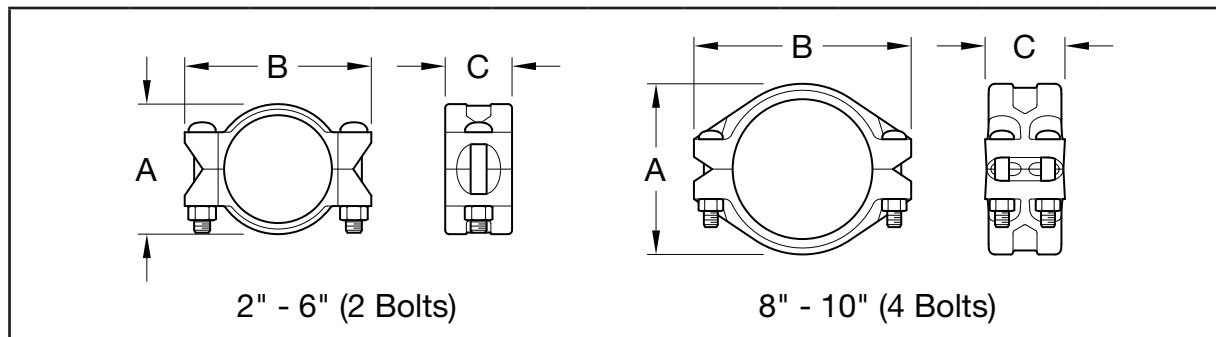


Grinnell

by Tyco Fire Suppression & Building Products

Figure 909

Plain End Coupling



Nominal Pipe Size		Max.† Pressures psi (bar)	Max.† End Load Lbs. (kN)	Nominal Dimensions			Coupling Bolts			Approx. Weight Lbs. (kg)
ANSI Inches DN	O.D. Inches (mm)			A Inches (mm)	B Inches (mm)	C Inches (mm)	Qty.	Size** Inches (mm)	Bolt Torque Lbs.-ft (Nm)	
2 DN50	2.375 (60,3)	750 (51,7)	3322.6 (14,78)	3.69 (93,7)	5.75 (146,1)	3.31 (84,1)	2	5/8 x 3-1/2 M16 x 90	150 (203,0)	5.4 (2,4)
2-1/2 DN65	2.875 (73,0)	600 (41,4)	3895.1 (17,33)	4.17 (105,9)	6.25 (158,8)	3.31 (84,1)	2	5/8 x 3-1/2 M16 x 90	150 (203,0)	5.9 (2,7)
3 DN80	3.500 (88,9)	600 (41,4)	5772.7 (25,68)	4.81 (122,2)	7.56 (192,0)	3.31 (84,1)	2	3/4 x 4-3/4 M20 x 121	200 (271,0)	9.0 (4,1)
4 DN100	4.500 (114,3)	450 (31,0)	7,156.9 (31,83)	5.93 (150,6)	8.63 (219,2)	3.88 (98,6)	2	3/4 x 4-3/4 M20 x 121	200 (271,0)	13.5 (6,1)
6 DN150	6.625 (168,3)	300 (20,7)	10,341.5 (46,00)	8.19 (208,0)	11.68 (296,7)	4.25 (108,0)	2	1 x 6-1/2 M24 x 165	250 (339,0)	23.5 (10,7)
8 DN200	8.625 (219,1)	250 (17,2)	14,606.6 (64,97)	10.69 (271,5)	13.63 (346,2)	4.91 (124,7)	4	7/8 x 5-1/2 M22 x 140	250 (339,0)	35.1 (15,9)
10 DN250	10.750 (273,0)	250 (17,2)	22,690.6 (100,93)	13.13 (333,5)	15.88 (403,4)	4.91 (124,7)	4	7/8 x 5-1/2 M22 x 140	300 (407,0)	48.5 (22,0)

** Gold color coded metric bolt sizes are available upon request.
 † Maximum pressure and end load are total from all loads based on standard weight steel pipe. Pressure ratings and end loads may differ for other pipe materials and/or wall thickness. Contact GRINNELL Products for details.

GRINNELL Products are available globally, through a network of distribution centers. Visit www.grinnell.com for your nearest distributor.

Refer to **Technical Data Sheet G190** on the Figure 909 Plain End Coupling for technical data, ordering information, installation and assembly instructions, and our limited warranty.



800-558-5236
www.grinnell.com
mechserv@grinnell.com



Grinnell

by Tyco Fire Suppression & Building Products