



Grinnell[®]
MECHANICAL PRODUCTS

Figure 9094 HDPE Flange Coupling

Ideal for:

- Mining
- Irrigation
- Tunneling

Now available in sizes 4 to 8 inches

The Figure 9094 Flange Coupling is part of GRINNELL[®] Mechanical Products HDPE System for joining HDPE (high-density polyethylene) pipe. It provides for an efficient transition from HDPE piping to ANSI class 125 or 150 flanged piping systems.

Additional Features:

- Ensures installation is safer, faster and more cost-effective than traditional joining methods
- Backed by the industry's best 10-year limited warranty

For technical details and ordering information, refer to **Technical Data Sheet G584**.



Figure 9094 HDPE Flange Coupling

TECHNICAL DATA

Sizes

4" - 8" (DN100 to DN200)

Housing

Ductile iron conforming to ASTM A-536, Grade 65-45-12

Protective Coatings

Orange paint (standard)

Bolt/Nuts

Track Head Bolts – conforming to ASTM A-183, Zinc Plated (Min. Tensile = 110,000 psi/758,422 kPa)

Hexagonal Nuts – conforming to ASTM A-563, Zinc Plated

Gasket

-30°F (-34°C) to +230°F (+110°C)

A petroleum-free, silicone-based lubricant, such as Dow Corning[®] 7 Release Compound is required for use in HDPE Couplings.

To prevent deterioration of gasket material, hydrocarbons should never be used with EPDM gaskets. See Data Sheet G610 for more gasket information.



800-558-5236
www.grinnell.com

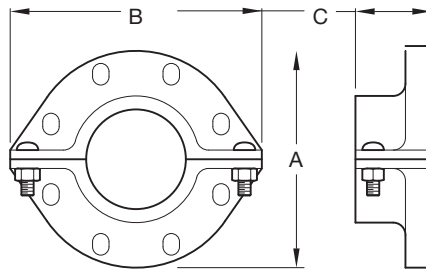


Grinnell[®]
MECHANICAL PRODUCTS

by Tyco Fire Suppression & Building Products

Figure 9094

HDPE Flange Coupling



Nominal Pipe Size		Nominal Dimensions			Coupling Bolts ‡		Approx. Weight Lbs. (kg)
ANSI Inches DN	O.D. Inches (mm)	A Inches (mm)	B Inches (mm)	C Inches (mm)	Quantity	Bolt Size Inches	
4 DN100	4.500 (114,3)	9.00 (229,0)	10.25 (260,0)	3.10 (79,0)	8	5/8 x 3-1/4	15.0 (6,8)
6 DN150	6.625 (168,3)	11.00 (279,0)	12.25 (311,0)	3.75 (95,0)	8	3/4 x 3-1/2	21.5 (9,8)
8 DN200	8.625 (219,1)	13.50 (343,0)	14.75 (375,0)	3.42 (87,0)	8	3/4 x 3-3/4	28.8 (13,1)

‡ Mating Bolts and Nuts are not supplied. Flange Mating Bolts must be at least SAE J429 Grade 5 or stronger. It is the responsibility of the purchaser to verify correct length for the intended application.

FIGURE 1
NOMINAL DIMENSIONS FIGURE 9094 HDPE FLANGE COUPLING

Nominal Pipe Size				Pipe Wall Thickness and Standard Dimension Ratio						
ANSI Inches DN	O.D. Inches (mm)	Tolerance +/- Inches (mm)	Maximum Pipe Ovality +/- Inches (mm)	SDR 7.3 Inches (mm)	SDR 9 Inches (mm)	SDR 11 Inches (mm)	SDR 15.5 Inches (mm)	SDR 17 Inches (mm)	SDR 21 Inches (mm)	SDR 32.5 Inches (mm)
4 DN100	4.500 (114,3)	0.020 (0.51)	0.040 (1.02)	0.616 (15.6)	0.500 (12.7)	0.409 (10.4)	0.290 (7.4)	0.265 (6.7)	0.214 (5.4)	0.138 (3.5)
6 DN150	6.625 (168,3)	0.030 (0.76)	0.050 (1.27)	0.908 (23.1)	0.736 (18.7)	0.602 (15.3)	0.427 (10.8)	0.327 (8.3)	0.265 (6.7)	0.204 (5.2)
8 DN200	8.625 (219,1)	0.039 (0.99)	0.075 (1.91)	1.182 (30.0)	0.958 (24.3)	0.784 (19.9)	0.556 (14.1)	0.507 (12.9)	0.340 (8.6)	0.265 (6.7)

Per Specification for Polyethylene (P.E.) Plastic Pipe ASTM F714, D2447, D3035

FIGURE 2
HDPE PIPE DIMENSIONAL SPECIFICATIONS

GRINNELL Mechanical Products valve, accessories and other products are available throughout the U.S., Canada and internationally through a network of distribution centers.



800-558-5236
www.grinnell.com



Grinnell
MECHANICAL PRODUCTS

by Tyco Fire Suppression & Building Products