



**Grinnell**<sup>®</sup>  
MECHANICAL PRODUCTS

## Figure 702 Mechanical Outlet Coupling

Ideal for:

- HVAC
- Industrial
- Mining

Now available in grooved, male-threaded or female-threaded outlets.

The GRINNELL<sup>®</sup> Figure 702 Mechanical Outlet Coupling has the combined features of a coupling and a reducing outlet, eliminating the need for a mechanical tee or other associated couplings. This makes installation faster, safer and more cost effective on the job site.

Additional features of the GRINNELL 702:

- Available in sizes 1 1/2" to 6"
- Rated for pressures up to 500 psi
- Can be used for vacuum service up to 10 inHG
- Backed by the industry's best 10-year limited warranty



**Figure 702 Mechanical Outlet Coupling**

### TECHNICAL DATA

#### Sizes

1 1/2" to 6" (DN40 to DN150)

#### Maximum Pressures

500 psi (34,5 bar)

#### Housing

Ductile iron conforming to ASTM A-536, Grade 65-45-12

#### Protective Coatings

Orange paint (standard)

#### Bolt/Nuts

Track Head Bolts – conforming to ASTM A-183, Zinc Plated  
(Min. Tensile = 110,000 psi/758,422 kPa)

Hexagonal Nuts – conforming to ASTM A563 Zinc Plated

#### Gasket

- Grade "E" EPDM, green color code  
-30°F (-34°C) to +230°F (+110°C)

- Grade "T" Nitrile, orange color code  
-20°F (-29°C) to +180°F (+82°C)

(See Data Sheet G610 for more gasket information.)



800-558-5236  
[www.grinnell.com](http://www.grinnell.com)



**Grinnell**<sup>®</sup>  
MECHANICAL PRODUCTS

by Tyco Fire Suppression & Building Products

# GRINNELL®

## Figure 702

### Mechanical Outlet Coupling

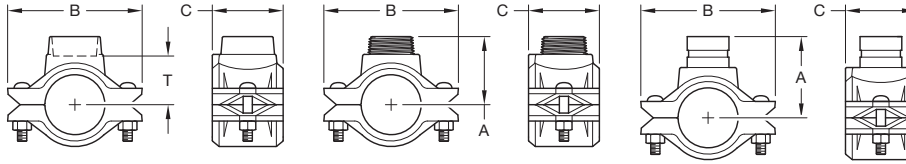


Figure 702  
Outlet Coupling with Female NPT Outlet

Figure 702  
Outlet Coupling with Male NPT Outlet

Figure 702  
Outlet Coupling with Grooved Outlet

Nominal Run Size		Nominal Branch Size				End Gap Range Inches (mm)	Max. Run End Load Lbs. (kN)	Nominal Dimensions - Inches (mm)				Coupling Bolt Size Inches	Approx. Weight Lbs. (kg)
ANSI Inches DN	O.D. Inches (mm)	Female NPT Inches (mm)	Male NPT Inches (mm)	Grooved ANSI Inches DN	O.D. Inches (mm)			A	B	C	T*		
1-1/2 DN40	1.900 (48,3)	1/2 (21,3)	—	—	—	0.81-0.88 (20-22)	1418 (6,3)	—	4.50 (114,3)	2.75 (70,0)	2.06 (52,0)	3/8 x 2-1/8	2.6 (1,2)
		3/4 (26,7)	—	—	—	0.81-0.88 (20-22)		—	4.50 (114,3)	2.75 (70,0)	2.06 (52,0)		2.6 (1,2)
		1 (33,7)	—	—	—	0.81-0.88 (20-22)		—	4.50 (114,3)	2.75 (70,0)	1.94 (49,0)		2.9 (1,3)
2 DN50	2.375 (60,3)	1/2 (21,3)	—	—	—	0.81-0.88 (20-22)	2215 (9,9)	—	5.00 (127,0)	2.75 (70,0)	2.32 (59,0)	3/8 x 2-1/8	3.1 (1,4)
		3/4 (26,7)	—	—	—	0.81-0.88 (20-22)		—	5.00 (127,0)	2.75 (70,0)	2.32 (59,0)		3.1 (1,4)
		1 (33,7)	1 (33,7)	1 DN25	1.315 (33,7)	0.81-0.88 (20-22)		3.50 (89,0)	5.00 (127,0)	2.75 (70,0)	2.20 (56,0)		3.3 (1,5)
2-1/2 DN65	2.875 (73,0)	1/2 (21,3)	—	—	—	1.25-1.50 (32-38)	3246 (14,4)	—	6.33 (161,0)	3.25 (83,0)	2.20 (56,0)	1/2 x 2-3/8	4.8 (2,2)
		3/4 (26,7)	—	—	—	1.25-1.50 (32-38)		—	6.33 (161,0)	3.25 (83,0)	2.56 (65,0)		4.6 (2,1)
		1 (33,7)	—	—	—	1.25-1.50 (32-38)		—	6.33 (161,0)	3.25 (83,0)	2.44 (62,0)		2.2 (4,4)
		—	1-1/4 (42,4)	1-1/4 DN32	1.660 (42,4)	1.25-1.50 (32-38)		3.70 (94,0)	6.33 (161,0)	3.25 (83,0)	—		5.1 (2,3)
3 DN80	3.500 (88,9)	—	1-1/2 (48,3)	1-1/2 DN40	1.900 (48,3)	1.25-1.50 (32-38)	4811 (21,4)	—	6.87 (175,0)	3.25 (83,0)	2.83 (72,0)	1/2 x 3	5.9 (2,7)
		3/4 (26,7)	—	—	—	1.25-1.50 (32-38)		—	6.87 (175,0)	3.25 (83,0)	2.75 (70,0)		6.2 (2,8)
		1 (33,7)	1 (33,4)	1 DN25	1.315 (33,7)	1.25-1.50 (32-38)		4.00 (102,0)	6.87 (175,0)	3.25 (83,0)	—		6.4 (2,9)
4 DN100	4.500 (114,3)	—	1-1/2 (48,3)	1-1/2 DN40	1.900 (48,3)	1.63-1.81 (41-46)	7952 (35,4)	—	8.31 (211,0)	3.66 (93,0)	3.70 (94,0)	5/8 x 3-1/2	9.2 (4,2)
		1 (33,7)	1 (33,4)	—	—	1.63-1.81 (41-46)		—	8.31 (211,0)	3.66 (93,0)	3.58 (91,0)		9.5 (4,3)
		1-1/2 (48,3)	1-1/2 (48,3)	1-1/2 DN40	1.900 (48,3)	1.63-1.81 (41-46)		4.88 (124,0)	8.31 (211,0)	3.66 (93,0)	3.31 (84,0)		9.5 (4,3)
		—	2 (60,3)	2 DN50	2.375 (60,3)	1.63-1.81 (41-46)		4.88 (124,0)	8.31 (211,0)	3.66 (93,0)	—		9.9 (4,5)
6 DN150	6.625 (168,3)	—	—	—	—	1.63-1.81 (41-46)	17,235 (76,7)	—	10.86 (276,0)	3.70 (94,0)	—	5/8 x 3-1/2	13.2 (6,0)
		1 (33,7)	—	—	—	1.63-1.81 (41-46)		—	10.86 (276,0)	3.70 (94,0)	4.76 (121,0)		13.2 (6,0)
		1-1/2 (48,3)	1-1/2 (48,3)	1-1/2 DN40	1.900 (48,3)	1.63-1.81 (41-46)		6.06 (154,0)	10.86 (276,0)	3.70 (94,0)	4.76 (121,0)		13.6 (6,2)
		—	2 (60,3)	2 DN50	2.375 (60,3)	1.63-1.81 (41-46)		6.06 (154,0)	10.86 (276,0)	3.70 (94,0)	—		14.3 (6,5)

\* Center of run pipe to end of outlet pipe (dimensions approximate). Female threaded outlet only.

TABLE 1  
FIGURE 702 OUTLET COUPLING

Nominal Outlet Size	Grooved	
ANSI Inches (mm)	Cv Values	Equivalent Length Feet (M)
1 (25)	12	30 (9,1)
1-1/4 (32)	42	10 (3,0)
1-1/2 (40)	72	10 (3,0)
2 (50)	130	10 (3,0)

Nominal Outlet Size	Threaded	
ANSI Inches (mm)	Cv Values	Equivalent Length Feet (M)
1/2 (15)	—	10 (3,0)
3/4 (20)	15	5 (1,5)
1 (25)	25	7 (2,1)
1-1/4 (32)	40	10 (3,0)
1-1/2 (40)	60	12 (3,7)

Values for flow of water at +60°F (+16°C).

TABLE 2  
FIGURE 702 FLOW CHARACTERISTICS

GRINNELL Mechanical Products, valves, accessories and other products are available throughout the U.S., Canada and internationally through a network of distribution centers.



800-558-5236  
www.grinnell.com



Grinnell  
MECHANICAL PRODUCTS

by Tyco Fire Suppression & Building Products

GM-2009004